

RESEARCH

Open Access



Molecular epidemiology of a fatal sarcoptic mange epidemic in endangered San Joaquin kit foxes (*Vulpes macrotis mutica*)

Jaime L. Rudd^{1,2*}, Deana L. Clifford^{1,2}, Brian L. Cypher³, Joshua M. Hull⁴, A. Jane Riner^{1,2} and Janet E. Foley¹

Abstract

Background: In 2013, sarcoptic mange, caused by *Sarcoptes scabiei* mites, precipitated a catastrophic decline of the formerly stable urban population of endangered San Joaquin kit foxes (*Vulpes macrotis mutica*) in Bakersfield, California, USA. In 2019, a smaller sarcoptic mange outbreak affected kit foxes 58 km southwest of Bakersfield in the town of Taft, California. To determine whether the Taft outbreak could have occurred as spillover from the Bakersfield outbreak and whether epidemic control efforts must involve not only kit foxes but also sympatric dogs (*Canis lupus familiaris*), coyotes (*Canis latrans*), and red foxes (*Vulpes vulpes*), we evaluated genotypes and gene flow among mites collected from each host species.

Methods: We used 10 *Sarcoptes* microsatellite markers (SARM) to perform molecular typing of 445 *S. scabiei* mites collected from skin scrapings from twenty-two infested kit foxes, two dogs, five coyotes, and five red foxes from Bakersfield, Taft, and other nearby cities.

Results: We identified 60 alleles across all SARM loci; kit fox- and red fox-derived mites were relatively monomorphic, while genetic variability was greatest in Bakersfield coyote- and dog-derived mites. AMOVA analysis documented distinct mite populations unique to hosts, with an overall F_{ST} of 0.467. The lowest F_{ST} (i.e. closest genetic relationship, $F_{ST} = 0.038$) was between Bakersfield and Taft kit fox-derived mites while the largest genetic difference was between Ventura coyote- and Taft kit fox-derived mites ($F_{ST} = 0.843$).

Conclusions: These results confirm the close relationship between the Taft and Bakersfield outbreaks. Although a spillover event likely initiated the kit fox mange outbreak, mite transmission is now primarily kit fox-to-kit fox. Therefore, any large-scale population level intervention should focus on treating kit foxes within the city.

Keywords: Bakersfield, California, Management, Host specificity, Microsatellites, Mites, *Sarcoptes scabiei*, Wildlife

Background

The first written reference to the skin disease now known as scabies dates to 1200 BCE [1]. From the time of the ancient Greeks and Romans through the middle ages, mange was known as the “itch” [2] and its cause was unknown until 1687, when the Italian

physician Giovanni Cosimo Bonomo identified a mite as the causative agent, making scabies one of the first diseases in human history with a known etiology [2]. In 1778, DeGeer formally named the itch mite *Acarus scabiei*, and this classification was revised in 1802 to a new genus, *Sarcoptes*, now with only a single species, *S. scabiei* [1, 3]. The World Health Organization (WHO) describes human scabies as a prevalent, contagious

*Correspondence: Jaime.Rudd@wildlife.ca.gov

² Wildlife Investigations Laboratory, California Department of Fish and Wildlife, Rancho Cordova, CA 95670, USA

Full list of author information is available at the end of the article



condition affecting more than 200 million people each year worldwide [4].

Sarcoptes scabiei is also the agent of sarcoptic mange in animals and affects over 100 mammalian species [3, 5]. Infested domestic animals may have been original sources of mites, which then crossed species boundaries and infested many wildlife hosts [6]. *Sarcoptes scabiei* now appears to be a single but highly variable mite species with many host-restricted genetic variants [7–13]. Although past assessment of host-variant relationships was limited to morphological examination [7], advances in DNA-based techniques now permit improved resolution of those relationships. Microsatellite studies in particular have revealed that, even when multiple species in a community are infested with sarcoptic mange, each may harbor its own host-restricted genetic variant (e.g. host-taxon law) [10]. Documentation of the host specificity of each variant can help determine the host that served as the original source of the epidemic, how many species are involved, and how best to intercede.

A continuing sarcoptic mange epidemic is causing a dramatic decline in a subpopulation of San Joaquin kit foxes (*Vulpes macrotis mutica*, kit fox hereafter). One-hundred years of widespread agricultural and urban development have extirpated these kit foxes throughout much of their historic range, such that this subspecies of kit fox is now federally endangered [14], persisting in a small meta-population of three main subpopulations and less than a dozen satellite subpopulations in the western and southern ends of the San Joaquin Valley in central California [14, 15]. Remarkably, the largest satellite subpopulation of kit foxes in the city of Bakersfield was stable despite ongoing urbanization [16, 17] and was considered a possible source for reintroductions to hedge against catastrophic declines in natural lands [17, 18]. However, after the initial detection of mange in 2013 [19], disease spread rapidly throughout this urban subpopulation causing substantial mortality. More than 460 kit foxes have been infested as of October 2018, and all cases have been lethal if not treated ([5, 19], BLC, unpublished data). In January 2019, sarcoptic mange was detected in a smaller subpopulation of kit foxes living in the city of Taft, 58 km southwest of Bakersfield (BLC, unpublished data).

Kit foxes in these unique and valuable urban populations are relatively habituated to human presence and easily captured, and affected individuals can be treated in rehabilitation facilities [19]. However, more efficient population level management, including prevention of the spread of mange, could have a greater impact than individual animal treatment. Without knowing whether kit foxes share mite variants with sympatric species such as coyotes (*Canis latrans*), dogs (*C. lupus familiaris*), or

red foxes (*Vulpes vulpes*), it is not known whether management strategies to address mange in kit foxes must incorporate the other hosts as well. Accordingly, the goal for this project was to use molecular epidemiology to determine if the Taft outbreak is part of the Bakersfield outbreak and to understand the extent to which sympatric species share *S. scabiei* mite variants with kit foxes. Such insight would be invaluable, as management strategies that target multiple canids would be considerably more difficult rather than a single species strategy primarily due to varying ecology, home range size, ease of capture for application of preventative treatment and public acceptance of prevention programs (e.g. dogs vs coyotes) [17, 20].

Methods

Collection of *Sarcoptes scabiei* mites

Sampling was opportunistic, consisting of male and female animals aged 4 months and older, and that were found dead, euthanized for humane reasons, or euthanized because of threats to public safety or domestic animals. These included foxes found dead or euthanized due to mange provided by the Endangered Species Recovery Program (ESRP) and the California Department of Fish and Wildlife (CDFW), ill stray dogs from Kern County Animal Services and Bakersfield Animal Care Center, and coyotes found dead due to vehicular strike (at Fort Irwin), euthanized due to severe mange (Ventura), hit by vehicles, or euthanized for depredation by the United States Department of Agriculture Wildlife Services (USDA, Fig. 1).

All carcasses were frozen at -20°C and then transferred to the CDFW Wildlife Investigations Laboratory (WIL) for examination and sampling of mites. Carcasses were carefully examined for skin scaling, hair loss, pustules, papules and hyperkeratosis along the tail, rear legs, dorsum, abdomen, elbows, forelegs, neck and head. Skin at the periphery of suspected lesions was scraped with a sterile surgical blade; contents of the scraping were placed onto a clean microscope slide with 3 drops of sterile water and examined under a magnification of $40\times$ for presence of mites. Mites were morphologically identified as *S. scabiei* [21] and 5×5 cm sections of mite-positive skin were excised and stored in sterile plastic bags. Because mites were rare on dog skin, positive skin scrapings from dogs were flushed from the glass slide into 2 ml microfuge tubes with 70% ethanol. Skin samples and microfuge tubes were stored at -20°C .

Preparation of mite DNA and microsatellite analysis

Frozen skin and scraping contents were thawed and individual mites collected using microscopy. Each mite was

pierced with a sterile 18-gauge needle under a dissecting microscope and digested overnight in lysis buffer and proteinase K (Qiagen, Valencia, CA, USA) at 56 °C. The Micro DNA Extraction Kit (Qiagen) procedure was used for the preparation of mite DNA from each individual mite according to the manufacturer's recommendations. Final DNA from each mite was eluted in 60 µl of buffer AE.

We used 10 microsatellite markers (SARMS 33–38, 40, 41, 44 and 45) to genotype mites with modifications to the published protocol [10]. Forward primers were labelled with HEX or 6-FAM dye (Integrated DNA Technologies, Coralville, IA, USA) and reconstituted into 100 µM working dilutions. Primer pairs were combined into paired multiplexes with 1.5–2.5 µM of each primer. We performed PCR using the Qiagen 2× Type-it Multiplex PCR Master Mix, 10× multiplex primer mix (2.5 µl), DNA-free water (7 µl) and 2–3 µl DNA for a total reaction of 25 µl. Thermocycling conditions were as published [11]. PCR products were transferred to 96-well plates (Biotix Inc., San Diego, CA, USA) for electrophoresis and measurement of length polymorphisms on an ABI 3730 analyzer (Thermo Fisher Scientific, CA, USA) at the Veterinary Genetics Laboratory (Davis, CA, USA) and output sequence alignments were automated using the program STRand [22]. Microsatellite allele scoring was performed with the R-package *MSATALLELE* [23]. Data were first organized in an Excel (Microsoft, Redmond, WA, USA) spread sheet and converted into genepop format using the program CREATE [24]. Possible genotyping errors due to stuttering or large allele dropout were evaluated using MICRO-CHECKER [25]. Null alleles were estimated using ML-RELATE [26].

Genetic analysis for population differentiation

Initially, we genotyped 20–30 mites from each host individual, except where only one or two mites could be found (e.g. dogs). After genotyping 351 mites from 19 canids at 20–30 mites per individual, it was observed that mites from individual kit fox lacked genetic diversity, therefore subsequent analysis only incorporated 1–6 mites per kit fox host individual.

For mites from each host population, we estimated allelic richness (R), number of polymorphic loci, expected (H_e) and observed heterozygosity (H_o), Hardy-Weinberg equilibrium (HWE), linkage disequilibrium (LD) and partitioned components of variance using analysis of molecular variance (AMOVA). To evaluate differentiation among the *S. scabiei* mite populations, we calculated the pairwise F_{ST} and visualized the differences using principal components analysis (PCA). Analyses were completed using the software GENALEX v.6.2 [27] and R packages

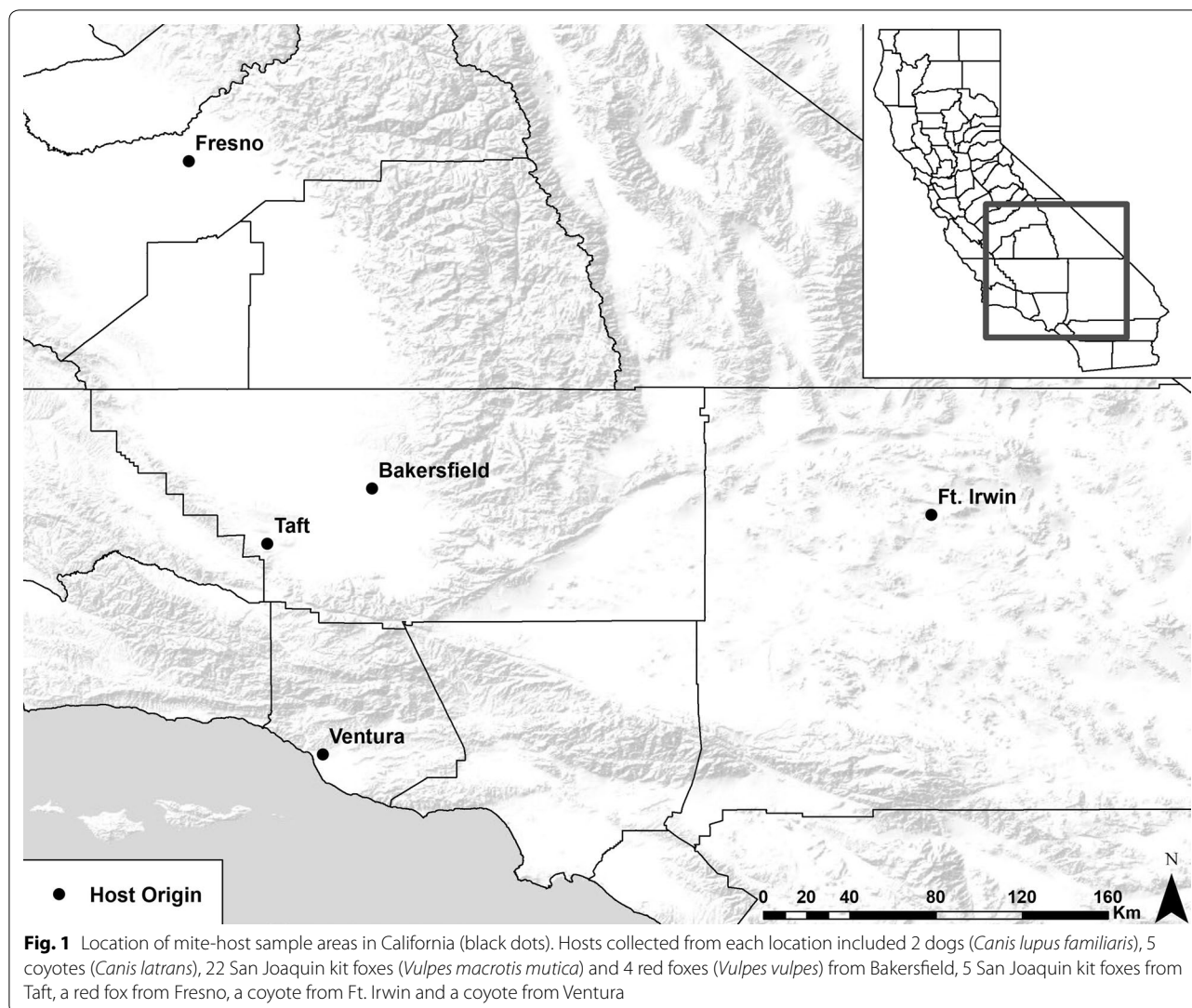
[28] *PopGenReport* [29], *adegenet* [30] and *poppr* [31]. P -values ≤ 0.05 were considered statistically significant. We used a multilocus Bayesian clustering algorithm in STRUCTURE [32] to determine the number of population groups (K) and to probabilistically group individuals without using the known geographical location or host species (dog, coyote, red fox, kit fox). We used the population admixture model with a flat prior and assumed that allele frequencies were correlated among populations. We ran simulations for 800,000 iterations following a 'burn-in' period of 200,000. We used these initial settings to estimate the probability of one through eight clusters (K), with each run replicated 10 times. We averaged the log $\Pr(X|K)$ statistics across the multiple runs for each of the eight K estimates. We selected the K value of highest probability by identifying the set of values where the log $\Pr(X|K)$ value was maximized and subsequently selecting the minimum value for K that did not sacrifice explanatory ability [33, 34]. We defined membership to a cluster based upon the highest proportion of ancestry to each inferred cluster. Origin of hosts was mapped using ArcGIS version 10.3.1 (ESRI, Redlands, CA, USA).

Results

We assessed population genetics of 445 *S. scabiei* mites from 41 host individuals in four host species, including six mites from two dogs from Bakersfield, 137 mites from seven coyotes (five from Bakersfield, one from Fort Irwin, and one from Ventura), 192 mites from 22 kit foxes from Bakersfield, 23 mites from five Taft kit foxes, and 87 mites from four red foxes from Bakersfield and one from Fresno (Table 1). Although occasional loci of particular mites did not amplify (Additional file 1: Table S1), 60 alleles were detected across the 10 microsatellite loci of all four host species, ranging from two alleles detected at SARM-38 to 11 alleles at SARM-33 (Additional file 2: Table S2). A total of 31 private alleles (i.e. alleles found only in one population and among the broader collective populations of study) were detected, distributed among eight loci. All loci showed LD ($P=0.001$) and significant deviations from HWE ($P<0.001$).

Kit fox mites

Among the Bakersfield kit fox-derived mites, despite relatively large numbers of mites, there was low overall mean allelic richness ($R=1.29$) and all except SARM-33, 40, 41 and 44 were monomorphic (Table 2, Additional file 1: Table S1). There were 15 alleles across the variable microsatellite loci including a private allele at SARM-40 at a frequency of 0.003. Values of H_o (0.082) and H_e (0.117) were relatively low. SARM-33, 40 and 41



were not in HWE, had possible null alleles at frequencies of 0.135, 0.177 and 0.167, respectively, and SARM-33 and 40 were in LD ($P=0.001$). Mites collected from Taft kit foxes were similar to Bakersfield kit fox mites and also had low allelic richness ($R=1.19$). There were only two polymorphic loci, SARM-40 and 44 (Table 2) and a total of 12 alleles across all loci. No private alleles were detected and, similar to Bakersfield kit fox mites, H_o (0.076) and H_e (0.085) were low. All alleles were in HWE and there was no LD.

Red fox mites

Red fox-derived mites from Bakersfield had multiple alleles only at the same three loci as kit fox mites, whereas SARM-36 was also variable among the Fresno red fox mites (Table 2). A single private allele was detected at SARM-41 at a frequency of 0.05 in mites from the Fresno

red fox and no private alleles were detected in mites from the Bakersfield red foxes. Mean R was low for both Bakersfield and Fresno ($R=1.28$) with 15 and 14 total alleles detected in these mite populations, respectively. Values of H_e from both Bakersfield and Fresno resembled the kit fox mites, as did H_o from Bakersfield, whereas H_o from Fresno was slightly lower (0.114). The only deviation from HWE was at SARM-33 in mites from Bakersfield ($P<0.05$). A null allele was detected at SARM-33 at a frequency of 0.295. SARM-33 and SARM-40 were in LD ($P=0.04$). Null alleles were not detected in mites from the Fresno red fox and there was no LD.

Domestic dog mites

Despite obtaining only three mites from each of the two dogs, only two loci (SARM-35 and 37) had fixed alleles

Table 1 Total number of alleles and the number of private alleles detected in 10 microsatellite loci for 445 *Sarcoptes scabiei* mites

Locus	No. of alleles	No. of private alleles
SARM-33	11	7
SARM-34	10	8
SARM-35	4	3
SARM-36	3	0
SARM-37	4	2
SARM-38	2	0
SARM-40	0	5
SARM-41	6	2
SARM-44	5	1
SARM-45	5	3

with a total of 22 alleles detected (Table 2). Two private alleles were detected at SARM-34. Average allelic richness was 2.08 and dog mites had lower H_o (0.017), but higher H_e (0.368) than mites collected from foxes (Table 1). Only SARM-35 and SARM-37 were in HWE and null alleles were detected at SARM-33 and 34 at frequencies of 0.382 and 0.403, respectively. LD was detected between SARM-33 and 34 ($P=0.003$), 36 ($P=0.02$), 38 ($P=0.02$), 40 ($P=0.03$); SARM-34 and 36 ($P=0.05$), 38 ($P=0.04$) and 40 ($P=0.04$); SARM-36 and 38 ($P=0.03$) and 40 ($P=0.03$); SARM-38 and 40 ($P=0.02$); and SARM-41 and 44 ($P=0.003$).

Coyote mites

Similar to dogs, the majority of loci in mites from coyotes were variable, with only three fixed loci in mites from Ft. Irwin (SARM-36, 37 and 38) and none from Bakersfield (Table 2). However, all except SARM-34 and 44 were monomorphic in mites from Ventura. Total numbers of detectable alleles were much higher than for other mite populations, with 52 detectable alleles in Bakersfield coyotes. There were private alleles in Bakersfield coyotes at eight loci (SARM-33, 34, 35, 37, 40, 41, 44 and 45), a single private allele in Ft. Irwin at SARM-40 and a single private allele in Ventura at SARM-34. Mean R (2.78) was notably high in these Bakersfield coyote mites whereas the lowest overall H_o (0.023) and H_e (0.032) occurred in the Ventura coyote mites. There was significant HWE departure for Ventura SARM-44 ($P=0.01$) and for all loci in Bakersfield coyote mites ($P<0.05$), but none in Ft. Irwin. Null alleles were detected at all loci except SARM-45 at frequencies ranging between 0.121 and 0.364 for Bakersfield coyote mites. Bakersfield coyote mites had LD at SARM-33 and 34 ($P=0.002$), 36 ($P=0.02$), 37 ($P=0.001$), 38 ($P=0.001$), 40 ($P=0.001$), 41 ($P=0.001$), 44 ($P=0.001$) and 45 ($P=0.02$); SARM-34 and 36

Table 2 Characteristics of genetic variability among 445 *Sarcoptes scabiei* for each host-derived mite populations

Mite host	No. of mites	R	No. of polymorphic loci	H_o	H_e
Bakersfield kit fox ($n=22$)	192	1.29	3	0.082	0.117
Taft kit fox ($n=5$)	23	1.19	2	0.076	0.083
Bakersfield red fox ($n=4$)	67	1.28	3	0.071	0.119
Fresno red fox ($n=1$)	20	1.28	4	0.100	0.114
Bakersfield dog ($n=2$)	6	2.08	8	0.017	0.368
Bakersfield coyote ($n=5$)	103	2.78	10	0.245	0.520
Ft. Irwin coyote ($n=1$)	15	1.79	7	0.288	0.273
Ventura coyote ($n=1$)	19	1.13	2	0.023	0.032

Abbreviations: n, no. of hosts sampled; R, allelic richness; H_o , observed heterozygosity; H_e , expected heterozygosity

($P=0.001$), 38 ($P=0.001$) and 44 ($P=0.002$); SARM-35 and 45 ($P=0.001$); SARM-36 and 38 ($P=0.001$); SARM-37 and 38 ($P=0.001$), 40 ($P=0.001$) and 44 ($P=0.001$); and SARM-40 and 44 ($P=0.001$) and 45 ($P=0.01$). LD was also detected in Ft. Irwin coyote mites between SARM-36 and 40 ($P=0.03$).

Host population differentiation

AMOVA analysis showed significant differentiation among host species-derived mite populations (46.8%, $P=0.001$). Pairwise F_{ST} values showed the most closely related populations were mites from Bakersfield and Taft kit foxes ($F_{ST}=0.038$), followed by mites from kit foxes and red foxes from Bakersfield ($F_{ST}=0.05$, Table 3). The least related mites were from the Taft kit foxes and Ventura coyote ($F_{ST}=0.843$). Bakersfield kit fox and Bakersfield coyote mites were also genetically distinct (0.508) as were Bakersfield coyote and dog mites (0.168). These relationships were also clear on the scatterplot of the PCA of mites, on which Bakersfield and Taft mites clustered together, but were distinct from all other mites (Fig. 2).

Bayesian clustering of the total data set revealed maximum log Pr (X|K) for three clusters. The first cluster was composed of the mite samples from dogs, Bakersfield coyotes, Santa Barbara coyotes, Ventura coyotes and Fresno red foxes. The second group included some of the mite samples from Bakersfield red foxes and some of the mite samples from Bakersfield kit foxes. The last cluster included the remainder of the Bakersfield red fox and kit fox mite samples, as well as the Taft kit fox mite samples (Fig. 3). The data show strong separation between the group composed of mites collected from dogs, coyotes

and Fresno red foxes and a second group composed of mites collected from kit fox and Bakersfield red fox. Additional structure is apparent within the sample of mites collected from kit fox and Bakersfield red fox.

Discussion

Sarcoptes scabiei infests a wide array of hosts in many communities. Although multiple hosts in a community may experience mange simultaneously, examination of mite genetics often reveals various degrees of host preference and specificity, a phenomenon described as the “host-taxon law” [6, 10, 11, 35–41]. Mange is fatal in kit foxes and may contribute to local extinction of the endangered San Joaquin kit fox in Bakersfield [19, 42]. Therefore, we investigated the population genetic structure of *S. scabiei* mites among these host species in order to understand the risk that coyotes, dogs and red foxes pose for mite spillover into kit foxes, with the ultimate goal of developing an intervention strategy. Our data clearly reveal host specificity and that kit foxes acquire mite infestations from other kit foxes, both in Bakersfield and in Taft.

Based on data from 10 microsatellite markers, the most important source of population structure (46% on AMOVA) among the mites was the host and to a lesser degree geographical source, although samples from geographical locations outside of Bakersfield were limited as this was not the original intention of the study. Bakersfield mites from kit and red foxes, and mites from Taft kit foxes, had relatively few alleles and low heterozygosity compared to dogs and coyotes, comprising an obvious cluster differentiated from other host species regardless of geographical area. However, red fox mites from Fresno were less closely related to the Bakersfield or Taft fox mites, and regardless of location. While mites from domestic dogs and coyotes were intermixed, suggesting different epidemiological cycles of mange in different geographical areas, especially from areas of greater distance from Bakersfield (e.g. Fresno, Ventura and Ft.

Irwin) in which contacts with mange-infested interspecific species is limited or non-existent. The lack of genetic variability and fixation of alleles among Bakersfield kit and red foxes is consistent with a founder event in the Bakersfield fox population. Because the Bakersfield outbreak was reported six years prior to the Taft outbreak, it is suspected that the source of mites in Taft was Bakersfield. Further host genetic analysis of Bakersfield and Taft kit foxes could elucidate gene flow between foxes in these locations, and additional camera or telemetry data could help clarify prospects for gene flow among the kit foxes and mites as well.

Thirteen of the 14 alleles detected in Bakersfield kit fox mites, all 12 alleles in Taft kit fox mites, and all 15 alleles in red fox mites from Bakersfield were also found in coyotes and domestic dogs. The Bakersfield kit fox-derived mites had one private allele, but only at low frequencies which could be due to genotyping error. Presence of private alleles can indicate isolation of mite populations and host-associated genetic variants [11]. *Sarcoptes scabiei* mites can be transmitted between red foxes and domestic dogs in Europe [10], supporting the likelihood that the original source of mange among Bakersfield kit foxes was coyotes or dogs. Further indication of an original spillover in Bakersfield and Taft with a founder event is the absence of polymorphic loci across 282 mites collected from 31 foxes (27 kit foxes and 4 red foxes) belonging to the same genus (*Vulpes*). Bakersfield dog and coyote mites had high R, H_o and H_e consistent with a large ancestral population of mites as is described for other mites collected from the genus *Canis* [12, 43].

Multiple studies [11, 13, 40, 41, 43] have examined a relatively small number of mite individuals from a host individual, implicitly assuming that genetic variability of mites on a single host was negligible. We found little benefit to sampling more than 25–30 individual mites per host individual in our study, in part because common alleles tend to be more informative than rare alleles when evaluating genetic composition within a population

Table 3 F_{ST} estimates for 10 microsatellite loci examined from 445 *Sarcoptes scabiei* mites for each host-derived mite population

	Bakersfield dogs	Bakersfield coyotes	Ft. Irwin coyote	Ventura coyote	Bakersfield kit foxes	Fresno red fox	Bakersfield red foxes	Taft kit foxes
Bakersfield dogs	–							
Bakersfield coyotes	0.168	–						
Ft. Irwin coyote	0.344	0.109	–					
Ventura coyote	0.626	0.263	0.553	–				
Bakersfield kit foxes	0.692	0.508	0.636	0.795	–			
Fresno red fox	0.663	0.301	0.558	0.787	0.706	–		
Bakersfield red foxes	0.657	0.413	0.563	0.796	0.050	0.701	–	
Taft kit foxes	0.704	0.407	0.627	0.843	0.038	0.781	0.123	–

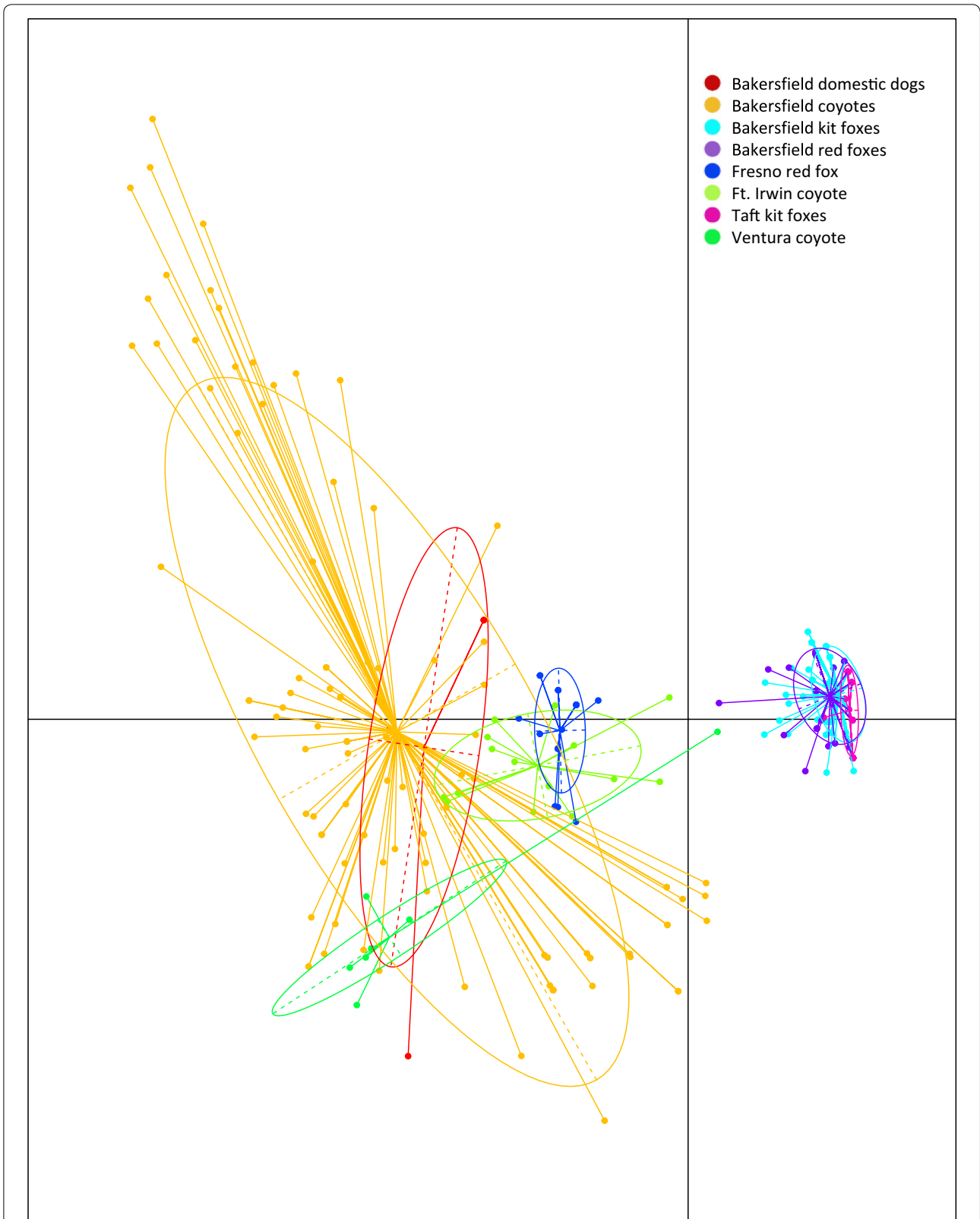
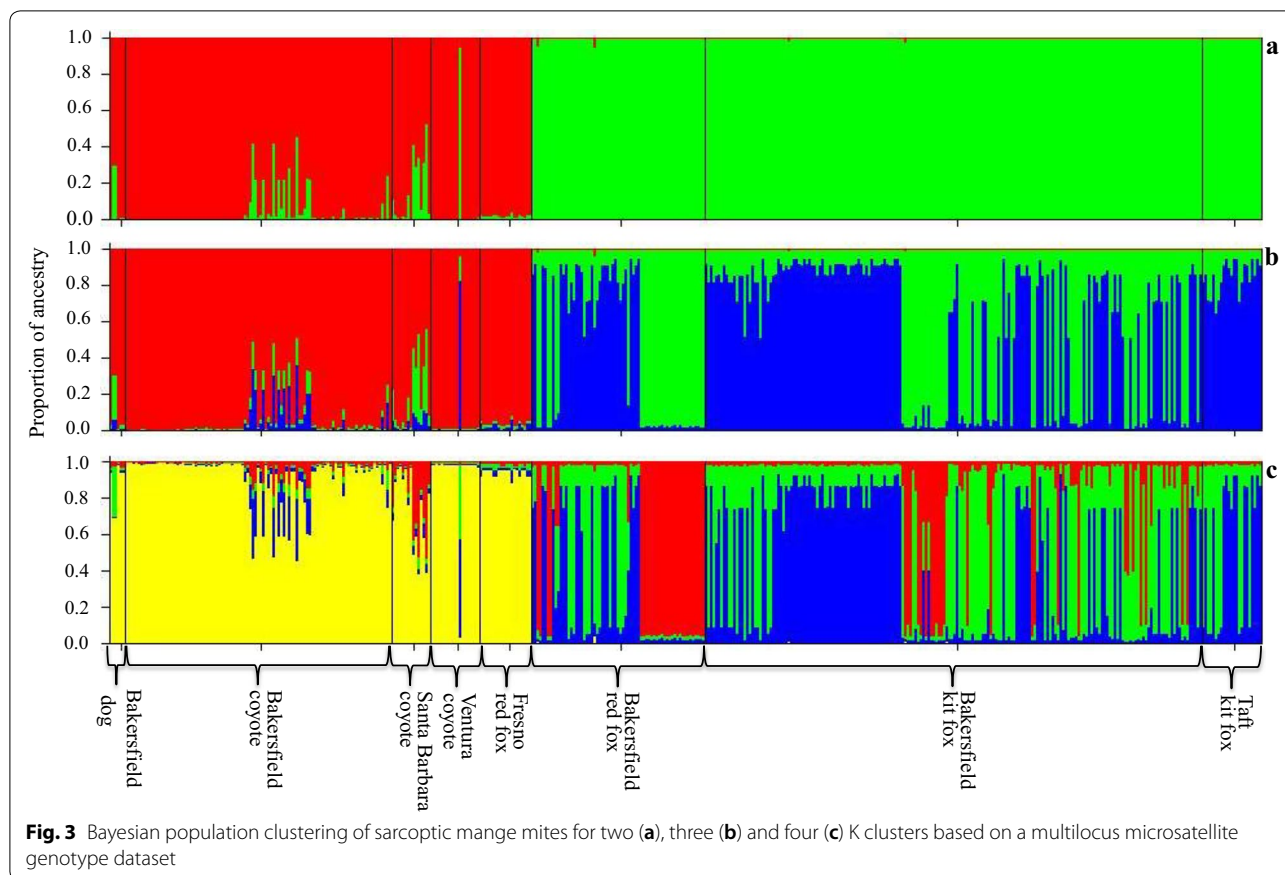


Fig. 2 Dispersion of dog-, coyote-, kit fox- and red fox-associated mite populations according to principal components analysis (PCA). Each color-coded shape represents a single mite taken from 4 different host species



[44], and also because there was so little genetic variability among mites from any kit fox individual. Moreover, in the case of dogs, we could not necessarily achieve our target sample size of 30 mites. Despite this limitation, the six mites we did collect from two dogs showed considerable heterozygosity and allelic richness.

Coyote mites from Bakersfield, while the most variable, also had significant deviations from HWE, were in LD, and may have had null alleles, findings similar to other *Sarcoptes* and mite studies [10, 43, 45]. Null alleles are found in most taxa and are especially prominent in insects and bivalves, resulting in homozygous excess and deviations from HWE [46–48]. This suggests that we may be underestimating the total variability in the coyote mite population. Given the larger home range sizes of coyotes, it is also possible that the deviations from HWE could have occurred if locations of sampling of coyotes and their mites were different from the areas where they typically resided (e.g. Wahlund effect).

Microsatellites are commonly used to study recent evolutionary events and have often been used to study molecular genetics of mange, thus our use of microsatellites allows our results to be compared directly to findings in the literature. There are other molecular methods

such as Radseq, which analyzes single nucleotide polymorphisms (SNPs), which may offer insight into finer scale phylogeographical patterns [49] and possible historic host-associated introductions. Further, use of SNPs could potentially avoid some of the biases and subjectivity that can impact allele scoring of microsatellites. Whether using microsatellites or whole next-generation genotypical approaches, ongoing genetic surveillance will be necessary to detect rare cross-species transmission among southern San Joaquin Valley canids which could initiate mange emergence in exurban kit foxes, an event that could contribute to species wide declines.

Scabies in humans is often associated with overcrowding such as in hospitals, nursing homes, prisons and schools [50–54]. High population densities may underlie sarcoptic mange epidemics in wildlife as well [55]. The Bakersfield kit fox population is uniquely dense relative to exurban populations and these kit foxes may share dens with skunks (*Mephitis mephitis*) and domestic cats (*Felis catus*) or occupy dens previously used by red foxes, coyotes, or feral dogs. Such a complex contact network with high density and high host biodiversity could exacerbate the mange epidemic; however, biodiversity *per se* appears unlikely

to contribute given our finding of host-restricted mite variants. The high densities of Bakersfield kit foxes may contribute to the severe impact of mange on this population, which could suggest that less dense exurban populations may be at less risk. The existence of host-restricted mite variants could also explain why it is common to observe mange-infested animals living in a community with other, mange-free host species.

Conclusions

Large epidemics of sarcoptic mange with high case fatality rates can devastate free-ranging wildlife [56–60]. Spillover of mites from common and less clinically impacted species such as coyotes and domestic dogs, poses an important conservation challenge for wildlife managers and can inhibit recovery efforts [61]. Therefore, documenting the true likelihood of acquiring infestation from conspecific and sympatric hosts is crucial for intervention to support the most at-risk species. Our data clearly document that kit fox mites circulate primarily among Bakersfield kit foxes with occasional transmission or spillover to and from red foxes. The recent Taft epidemic is closely related to the epidemic in Bakersfield kit foxes and probably derived from Bakersfield kit foxes directly. This suggests that efforts to control mange in the kit fox population should focus on kit foxes and that other species are not primarily involved in this epidemic.

Supplementary information

Supplementary information accompanies this paper at <https://doi.org/10.1186/s13071-020-04328-3>.

Additional file 1: Table S1. Raw microsatellite genotypes of the 10 SARM microsatellite loci for *Sarcoptes scabiei* mites. A total of 445 mites were collected from the skin of 2 dogs (*Canis lupus familiaris*), 5 coyotes (*Canis latrans*), 22 San Joaquin kit foxes (*Vulpes macrotis mutica*) and 4 red foxes (*Vulpes vulpes*) from Bakersfield, CA. An additional 59 mites were collected from 5 kit foxes in Taft, a red fox from Fresno, a coyote from Ft. Irwin and a coyote from Ventura, CA. Data are organized by mite-derived host and host location.

Additional file 2: Table S2. Distributions of allele frequencies in 10 microsatellite loci among *Sarcoptes scabiei* mite populations by host and host location (allele sizes are in base pairs). Private alleles are denoted with “+”.

Abbreviations

H_e: expected heterozygosity; H_o: observed heterozygosity; HWE: Hardy-Weinberg equilibrium; LD: linkage disequilibrium; n: number of hosts sampled; PCA: principal components analysis; R: allelic richness; SARM: *Sarcoptes* microsatellite locus.

Acknowledgements

We wish to thank Erin Meredith and Mike Buchalski from CDFW for their guidance and advice with the genetic analysis. We thank the Endangered Species Recovery Program's Tory Westall, Erica Kelly and Christine Van Horn-Job; CDFWs Kelsey Clark and Abby Gwinn and the talent of CDFWs Meredith Simoneau for the graphical abstract; Eric Covington with the USDA Wildlife Services; Liam Murphy, a volunteer research assistant in the Foley Lab; the

California Living Museum; and the staff at Kern County Animal Services and Bakersfield Animal Care Center for their help in acquiring mite samples. We additionally would like to thank C. Reddell and G. Roemer from New Mexico State University for allowing us to use mite samples collected from their study animals in Ft. Irwin, CA. Lastly, we wish to thank the citizens of Bakersfield for taking an interest in kit foxes and reporting sick, moribund and deceased animals.

Disclaimer

The findings and conclusions in this article are those of the authors and do not necessarily represent the views of the CA Department of Fish and Wildlife or the U.S. Fish and Wildlife Service. The authors declare they have no competing interests.

Authors' contributions

JLR carried out sample collection, microsatellite typing, conducted the raw data analysis and wrote the manuscript. JMH performed the STRUCTURE analysis. DLC, BLC and JMH participated in study design and writing the manuscript. AJR processed the samples and prepared them for microsatellite analysis. JF participated in study design, data analysis and writing the manuscript. All authors read and approved the final manuscript.

Funding

This project received financial support from the Karen C. Drayer Wildlife Health Center, School of Veterinary Medicine, University of California, Davis; Morris Animal Foundation Grant D15ZO-013; the U.S. Fish and Wildlife Service Traditional Section 6 Grant program [F16AP00008]; the California Department of Fish and Wildlife; and the U.S. Bureau of Reclamation, Central Valley Project Conservation Program.

Availability of data and materials

Datasets supporting the findings of this article are included in the article and its additional files.

Ethics approval and consent to participate

Sample collection was opportunistic and performed with consent from study partners. Work was conducted under authorization of a 10(a)1(A) recovery permit TE825573-2 from the United States Fish and Wildlife Service, a Memorandum of Understanding from the California Department of Fish and Wildlife (CDFW) and University of California Davis Institutional Animal Care and Use protocol #18179.

Consent for publication

Not applicable.

Competing interests

The authors declare that they have no competing interests.

Author details

¹ Department of Medicine and Epidemiology, University of California, Davis, CA 95616, USA. ² Wildlife Investigations Laboratory, California Department of Fish and Wildlife, Rancho Cordova, CA 95670, USA. ³ Endangered Species Recovery Program, California State University, Stanislaus, Turlock, CA 95382, USA. ⁴ United States Fish and Wildlife Service, Sacramento, CA 95825, USA.

Received: 28 May 2020 Accepted: 30 August 2020

Published online: 07 September 2020

References

1. Arlian LG, Morgan MS. A review of *Sarcoptes scabiei*: past, present and future. *Parasit Vectors*. 2017;10:297.
2. Roncalli R. The history of scabies in veterinary and human medicine from biblical to modern times. *Vet Parasitol*. 1987;25:193–8.
3. Pence D, Ueckermann E. Sarcoptic mange in wildlife. *Rev Sci Tech*. 2002;21:385–98.
4. WHO. Scabies. Geneva: World Health Organization; 2020. https://www.who.int/neglected_diseases/diseases/scabies-and-other-ectoparasites/en/. Accessed 8 June 2019.

5. Bornstein S, Mörner T, Samuel WM. *Sarcoptes scabiei* and sarcoptic mange. 2nd ed. Ames: Iowa State University Press; 2001. p. 107–19.
6. Arlian LG. Biology, host relations, and epidemiology of *Sarcoptes scabiei*. *Annu Rev Entomol*. 1989;34:139–59.
7. Walton SF, Currie BJ, Kemp DJ. A DNA fingerprinting system for the ectoparasite *Sarcoptes scabiei*. *Mol Biochem Parasitol*. 1997;85:187–96.
8. Zahle M, Essig A, Gothe R, Rinder H. Molecular analyses suggest monospecificity of the genus *Sarcoptes* (Acari: Sarcoptidae). *Int J Parasitol*. 1999;29:759–66.
9. Walton S, Dougall A, Pizzutto S, Holt D, Taplin D, Arlian L, et al. Genetic epidemiology of *Sarcoptes scabiei* (Acari: Sarcoptidae) in northern Australia. *Int J Parasitol*. 2004;34:839–49.
10. Rasero R, Rossi L, Soglia D, Maione S, Sacchi P, Rambozzi L, et al. Host taxon-derived *Sarcoptes* mite in European wild animals revealed by microsatellite markers. *Biol Conserv*. 2010;143:1269–77.
11. Alasaad S, Oleaga A, Casais R, Rossi L, Min AM, Soriguer RC, et al. Temporal stability in the genetic structure of *Sarcoptes scabiei* under the host-taxon law: empirical evidences from wildlife-derived *Sarcoptes* mite in Asturias, Spain. *Parasit Vectors*. 2011;4:151.
12. Oleaga A, Casais R, Balseiro A, Espí A, Llaneza L, Hartasánchez A, et al. New techniques for an old disease: sarcoptic mange in the Iberian wolf. *Vet Parasitol*. 2011;181:255–66.
13. Alasaad S, Schuster RK, Gakuya F, Theneyan M, Jowers MJ, Maione S, et al. Applicability of molecular markers to determine parasitic infection origins in the animal trade: a case study from *Sarcoptes* mites in wildebeest. *Forensic Sci Med Pathol*. 2012;8:280–4.
14. United States Fish and Wildlife Service (USFWS). San Joaquin kit fox (*Vulpes macrotis mutica*) 5-year review: summary and evaluation. Sacramento, California: USFWS; 2010.
15. Cypher B, Phillips S, Kelly P. Quantity and distribution of suitable habitat for endangered San Joaquin kit foxes: conservation implications. *Canid Biol Conserv*. 2013;16:25–31.
16. Cypher B, Frost N. Condition of San Joaquin kit foxes in urban and exurban habitats. *J Wildl Manage*. 1999;63:930–8.
17. Cypher B. Kit Foxes. In: Gehrt S, Riley S, Cypher B, editors. *Urban carnivores: ecology, conflict, and conservation*. Baltimore, Maryland: Johns Hopkins University Press; 2010. p. 49–60.
18. Cypher B, Van Horn Job C. Management and conservation of San Joaquin kit foxes in urban environments. *Proc Vertebr Pest Conf*. 2012;25:347–52.
19. Cypher BL, Rudd JL, Westall TL, Woods LW, Stephenson N, Foley JR, et al. Sarcoptic mange in endangered kit foxes (*Vulpes macrotis mutica*): case histories, diagnoses, and implications for conservation. *J Wildl Dis*. 2017;53:46–53.
20. Bjurlin C, Cypher B. Encounter frequency with the urbanized San Joaquin kit fox correlates with public beliefs and attitudes toward the species. *Endanger Species Update*. 2005;22:107–15.
21. Fain A. Etude de la variabilité de *Sarcoptes scabiei* avec une révision des Sarcoptidae. *Acta Zool Pathol Antverpiensia*. 1968;47:1–196.
22. Toonen RJ, Hughes S. Increased throughput for fragment analysis on an ABI Prism® 377 automated sequencer using a membrane comb and STRand software. *Biotechniques*. 2001;31:1320–5.
23. Alberto F. MsatAllele_1.0: an R package to visualize the binning of microsatellite alleles. *J Hered*. 2009;100:394–7.
24. Coombs J, Letcher B, Nislow K. CREATE: a software to create input files from diploid genotypic data for 52 genetic software programs. *Mol Ecol Resour*. 2008;8:578–80.
25. Van Oosterhout C, Hutchinson WF, Willis DP, Shipley P. MICRO-CHECKER: software for identifying and correcting genotyping errors in microsatellite data. *Mol Ecol Notes*. 2004;4:535–8.
26. Kalinowski ST, Wagner AP, Taper ML. ML-Relate: a computer program for maximum likelihood estimation of relatedness and relationship. *Mol Ecol Notes*. 2006;6:576–9.
27. Peakall R, Smouse P. GenAlEx 6.5: genetic analysis in Excel. Population genetic software for teaching and research—an update. *Bioinformatics*. 2012;28:2537–9.
28. R Core Development Team. R: A language and environment for statistical computing. Vienna: R Foundation for Statistical Computing; 2018. <https://www.r-project.org/>.
29. Adamack AT, Gruber B. PopGenReport: simplifying basic population genetic analyses in R. *Methods Ecol Evol*. 2014;5:384–7.
30. Jombart T. Adegenet: a R package for the multivariate analysis of genetic markers. *Bioinformatics*. 2008;24:1403–5.
31. Kamvar ZN, Tabima JF, Grünwald NJ. Poppr: an R package for genetic analysis of populations with clonal, partially clonal, and/or sexual reproduction. *PeerJ*. 2014;2:e281.
32. Pritchard JK, Stephens M, Donnelly P. Inference of population structure using multilocus genotype data. *Genetics*. 2000;155:945–59.
33. Pritchard JK, Wen W. Documentation for STRUCTURE software: Version 2.2. <https://web.stanford.edu/group/pritchardlab/software.html>. Accessed 28 June 2020.
34. Waples RS, Gaggiotti O. What is a population? An empirical evaluation of some genetic methods for identifying the number of gene pools and their degree of connectivity. *Mol Ecol*. 2006;15:1419–39.
35. Arlian LG, Runyan RA, Estes SA. Cross infestivity of *Sarcoptes scabiei*. *J Am Acad Dermatol*. 1984;10:979–86.
36. Alasaad S, Granados J, Cano-Manuel F, Meana A, Zhu X, Pérez JM. Epidemiology of fasciolosis affecting Iberian ibex (*Capra pyrenaica*) in southern Spain. *Parasitol Res*. 2008;102:751–5.
37. Alasaad S, Soglia D, Sarasa M, Soriguer RC, Pérez JM, Granados JE, et al. Skin-scale genetic structure of *Sarcoptes scabiei* populations from individual hosts: empirical evidence from Iberian ibex-derived mites. *Parasitol Res*. 2008;104:101–5.
38. Gakuya F, Rossi L, Ombui J, Maingi N, Muchemi G, Ogara W, et al. The curse of the prey: *Sarcoptes* mite molecular analysis reveals potential prey-to-predator parasitic infestation in wild animals from Masai Mara, Kenya. *Parasit Vectors*. 2011;4:193.
39. Alasaad S, Sarasa M, Heukelbach J, Mijele D, Soriguer RC, Zhu X-Q, et al. Advances in studies of disease-navigating webs: *Sarcoptes scabiei* as a case study. *Parasit Vectors*. 2014;7:16.
40. Rentería-Solis Z, Min A, Alasaad S, Müller K, Michler FU, Schmäschke R, et al. Genetic epidemiology and pathology of raccoon-derived *Sarcoptes* mites from urban areas of Germany. *Med Vet Entomol*. 2014;28:98–103.
41. Matsuyama R, Yabusaki T, Kuninaga N, Morimoto T, Okano T, Suzuki M, et al. Coexistence of two different genotypes of *Sarcoptes scabiei* derived from companion dogs and wild raccoon dogs in Gifu, Japan: the genetic evidence for transmission between domestic and wild canids. *Vet Parasitol*. 2015;212:356–60.
42. Rudd J, Clifford D, Richardson D, Cypher B, Westall T, Kelly E, et al. Hematologic and serum chemistry values of endangered San Joaquin kit foxes (*Vulpes macrotis mutica*) with sarcoptic mange. *J Wildl Dis*. 2019;55:410–5.
43. Oleaga A, Alasaad S, Rossi L, Casais R, Vicente J, Maione S, et al. Genetic epidemiology of *Sarcoptes scabiei* in the Iberian wolf in Asturias, Spain. *Vet Parasitol*. 2013;196:453–9.
44. Hale ML, Burg TM, Steeves TE. Sampling for microsatellite-based population genetic studies: 25 to 30 individuals per population is enough to accurately estimate allele frequencies. *PLoS One*. 2012;7:e45170.
45. Sun JT, Lian C, Navajas M, Hong XY. Microsatellites reveal a strong subdivision of genetic structure in Chinese populations of the mite *Tetranychus urticae* Koch (Acari: Tetranychidae). *BMC Genet*. 2012;13:8.
46. Dakin E, Avise J. Microsatellite null alleles in parentage analysis. *Heredity*. 2004;93:504.
47. Chapuis M-P, Loiseau A, Michalakos Y, Lecoq M, Estoup A. Characterization and PCR multiplexing of polymorphic microsatellite loci for the locust *Locusta migratoria*. *Mol Ecol Notes*. 2005;5:554–7.
48. Rico C, Cuesta JA, Drake P, Macpherson E, Bernatchez L, Marie AD. Null alleles are ubiquitous at microsatellite loci in the wedge clam (*Donax trunculus*). *PeerJ*. 2017;5:e3188.
49. Jeffries DL, Copp GH, Lawson Handley L, Olsén KH, Sayer CD, Hänfling B. Comparing RAD seq and microsatellites to infer complex phylogeographic patterns, an empirical perspective in the crucian carp, *Carassius carassius* L. *Mol Ecol*. 2016;25:2997–3018.
50. Savin J. Scabies in Edinburgh from 1815 to 2000. *J Roy Soc Med*. 2005;98:124–9.
51. Hengge UR, Currie BJ, Jäger G, Lupi O, Schwartz RA. Scabies: a ubiquitous neglected skin disease. *Lancet Infect Dis*. 2006;6:769–79.
52. Tjioe M, Vissers WH. Scabies outbreaks in nursing homes for the elderly: recognition, treatment options and control of reinfestation. *Drug Aging*. 2008;25:299–306.
53. Hicks MI, Elston DM. Scabies. *Dermatol Ther*. 2009;22:279–92.

54. Hay R, Steer A, Engelman D, Walton S. Scabies in the developing world—its prevalence, complications, and management. *Clin Microbiol Infect.* 2012;18:313–23.
55. Lunelli A. An SEI model for sarcoptic mange among chamois. *J Biol Dyn.* 2010;4:140–57.
56. Mörner T. Sarcoptic mange in Swedish wildlife. *Rev Sci Tech.* 1992;11:1115–21.
57. León-Vizcaíno L, de Ruíz Ybáñez MR, Cubero MJ, Ortíz JM, Espinosa J, Pérez L, et al. mange in Spanish ibex from Spain. *J Wildl Dis.* 1999;35:647–59.
58. Soulsbury CD, Iossa G, Baker PJ, Cole NIKC, Funk SM, Harris S. The impact of sarcoptic mange *Sarcoptes scabiei* on the British fox *Vulpes vulpes* population. *Mammal Rev.* 2007;37:278–96.
59. Uraguchi K, Ueno M, Iijima H, Saitoh T. Demographic analyses of a fox population suffering from sarcoptic mange. *J Wildl Manage.* 2014;78:1356–71.
60. Martin AM, Burridge CP, Ingram J, Fraser TA, Carver S. Invasive pathogen drives host population collapse: effects of a travelling wave of sarcoptic mange on bare-nosed wombats. *J Appl Ecol.* 2018;55:331–41.
61. Jimenez MD, Bangs EE, Sime C, Asher VJ. Sarcoptic mange found in wolves in the Rocky Mountains in western United States. *J Wildl Dis.* 2010;46:1120–5.

Publisher's Note

Springer Nature remains neutral with regard to jurisdictional claims in published maps and institutional affiliations.

Ready to submit your research? Choose BMC and benefit from:

- fast, convenient online submission
- thorough peer review by experienced researchers in your field
- rapid publication on acceptance
- support for research data, including large and complex data types
- gold Open Access which fosters wider collaboration and increased citations
- maximum visibility for your research: over 100M website views per year

At BMC, research is always in progress.

Learn more biomedcentral.com/submissions

